

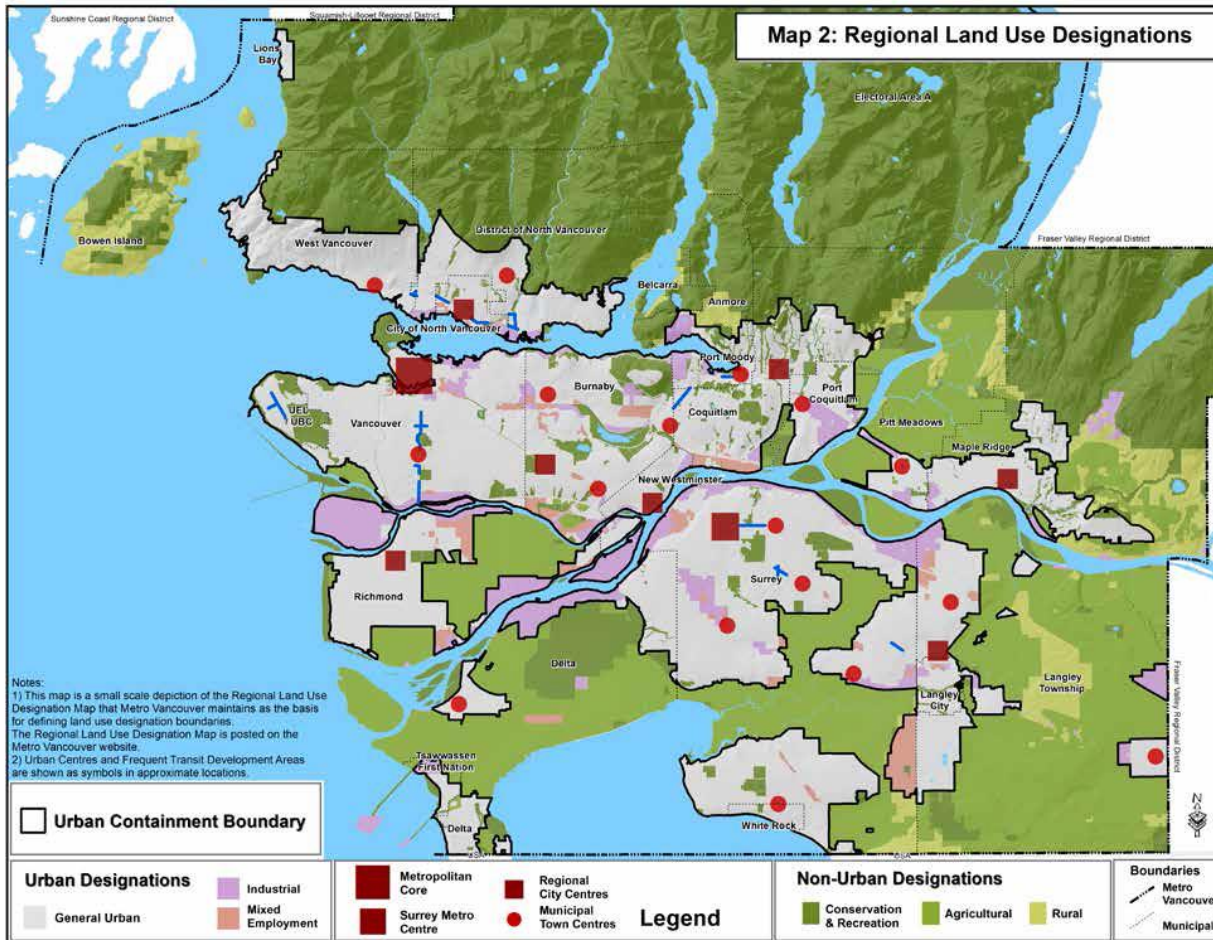
West Coast – VANCOUVER REGION



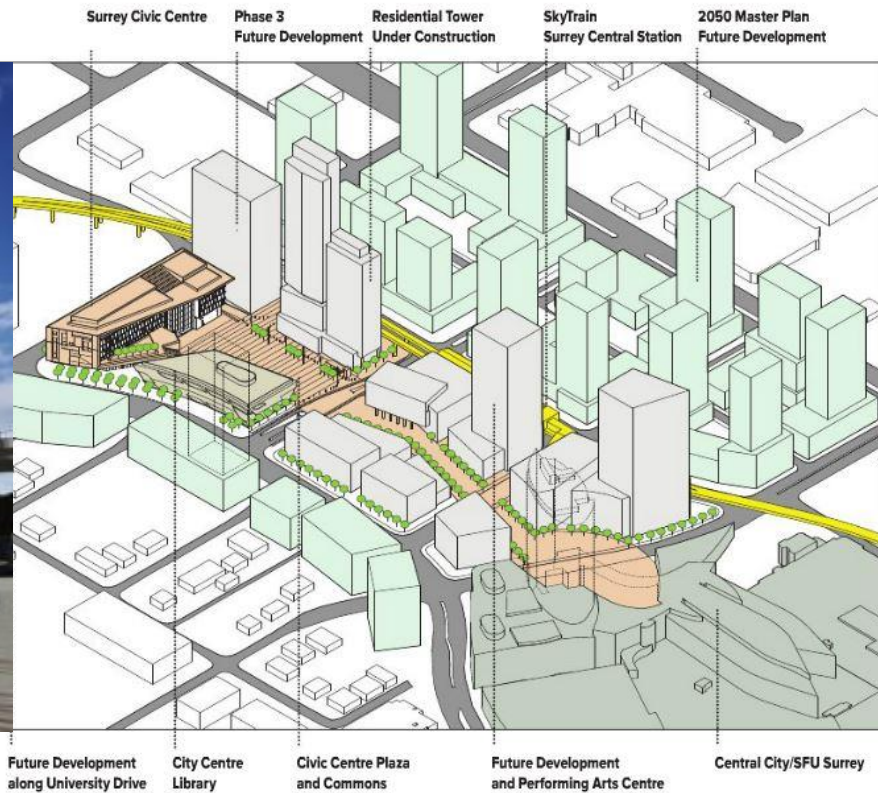
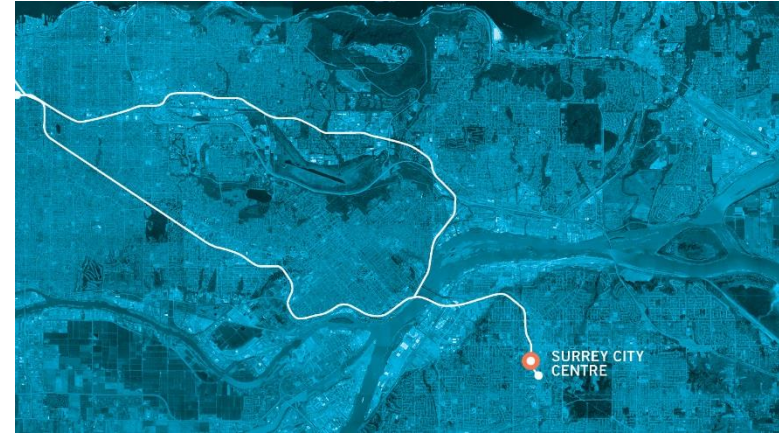
Joyce Drohan Architect, AIBC, AAA, SAA, MRAIC, CanU Board
Special Advisor, City Design Studio, City of Vancouver

METRO VANCOUVER REGIONAL GROWTH STRATEGY

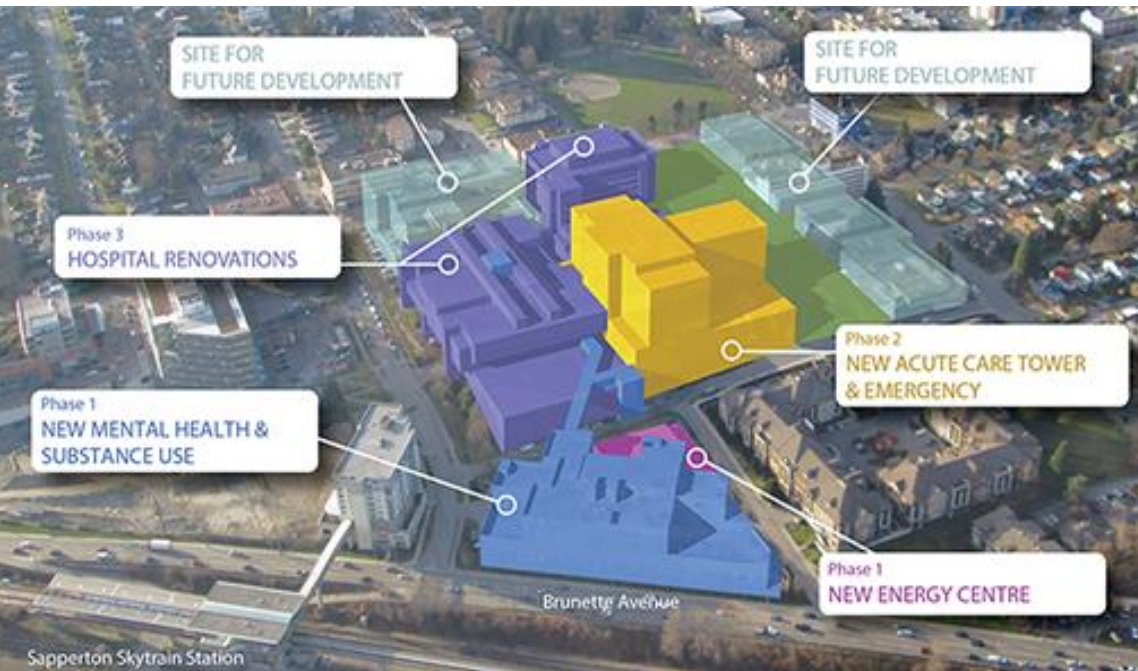
RESILIENT REGION



SURREY CITY CENTRE SURREY, BC



SAPPERTON STATION AREA PLAN NEW WESTMINSTER, BC



BRENTWOOD MALL REDEVELOPMENT BURNABY, BC



FROM MALL TO MIXED USE DESTINATION

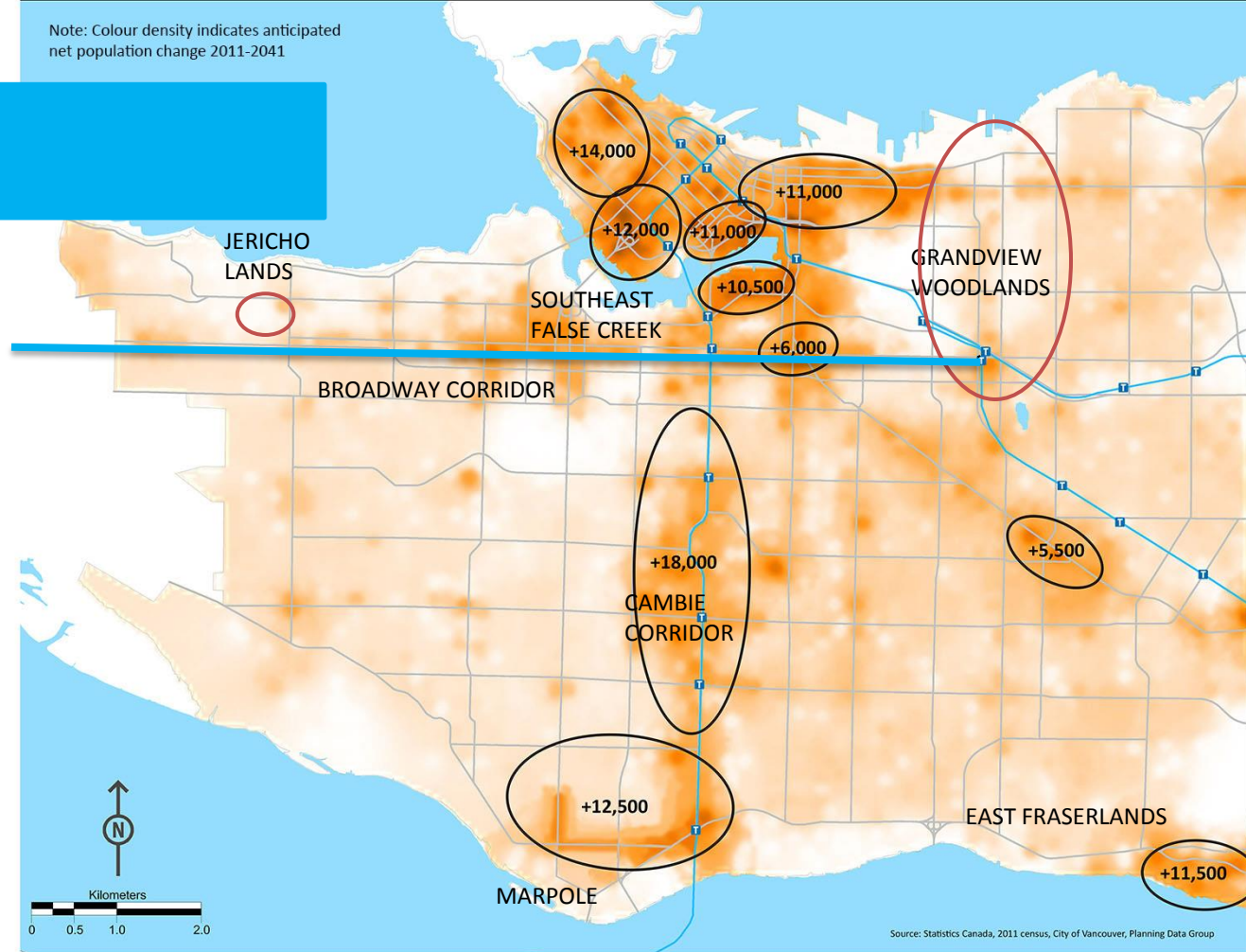
VANCOUVER RESILIENCY PLANNING GROWTH MANAGEMENT

City of Vancouver - 2011 to 2041 Projected Population Change

Note: Colour density indicates anticipated net population change 2011-2041

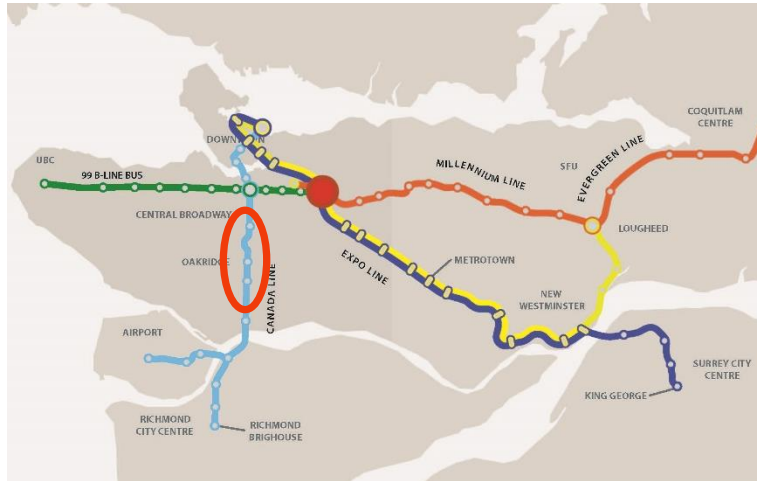
2011 - 2041

**Projected Population
Change = 150,000**



Source: Statistics Canada, 2011 census, City of Vancouver, Planning Data Group

CAMBIE CORRIDOR PLANNING - VANCOUVER



CAMBIE CORRIDOR VANCOUVER, BC

Courtesy of Ramsey Worden, James Cheng and GBL Architects



CAMBIE CORRIDOR PLANNING - VANCOUVER

OAKRIDGE MUNICIPAL TOWN CENTRE



Shopping Centre
Redevelopment



OAKRIDGE TOWN CENTRE



Area around Shopping Centre



Courtesy of DIALOG

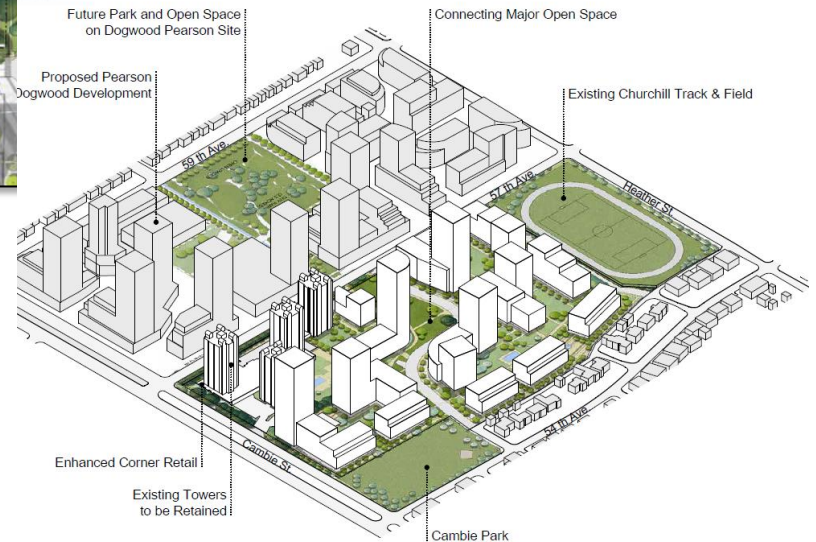
CAMBIE CORRIDOR PLANNING - VANCOUVER

PEARSON DOGWOOD REDEVELOPMENT – HEALTH HUB



CAMBIE CORRIDOR PLANNING - VANCOUVER

LANGARA GARDENS PLANNING – AFFORDABLE RENTAL HOUSING



CAMBIE CORRIDOR PLANNING – MARINE GATEWAY, VANCOUVER

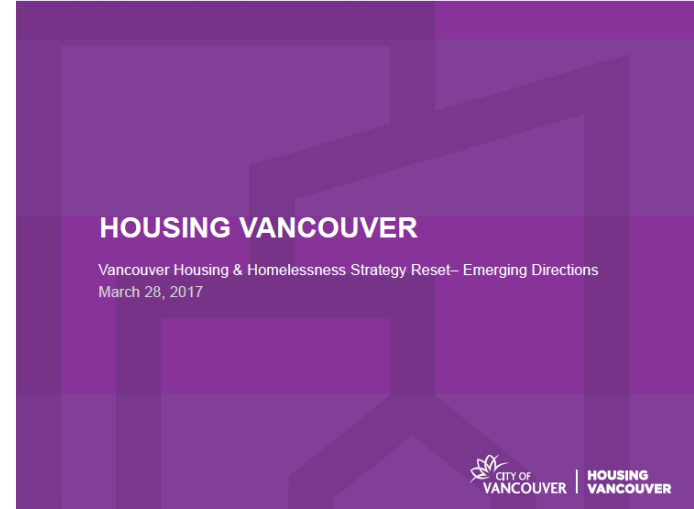


HOUSING CRISIS - VANCOUVER

The Right Supply

Actions to increase and speed up new housing connected to:

- residential incomes,
- household types and
- location



\$0-\$30,000



\$30,000-\$50,000



\$50,000-\$80,000

\$80,000-\$150,000



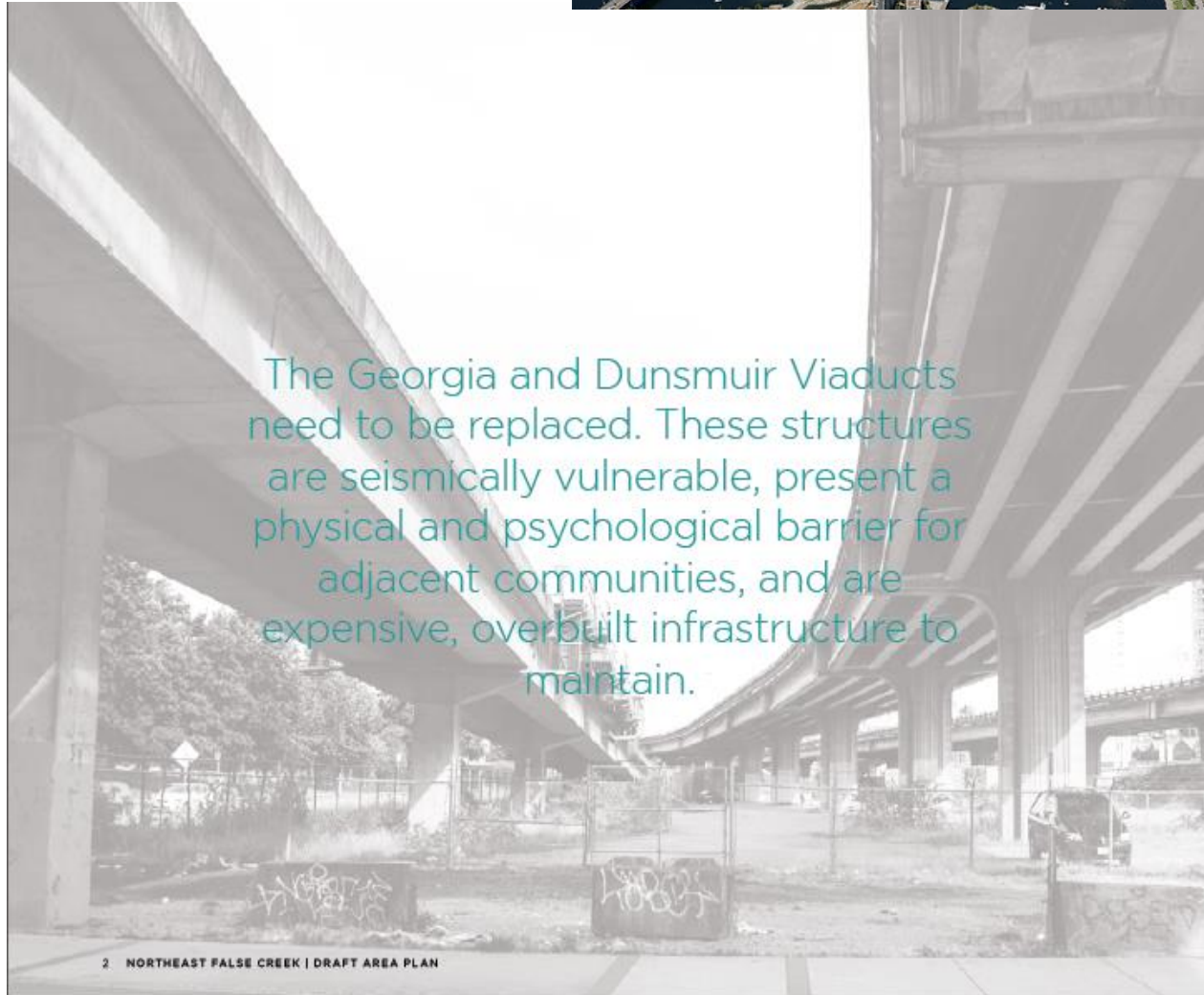
Occupation: Single parent, 2 kids, full-time job

Current Housing: Studio apartment

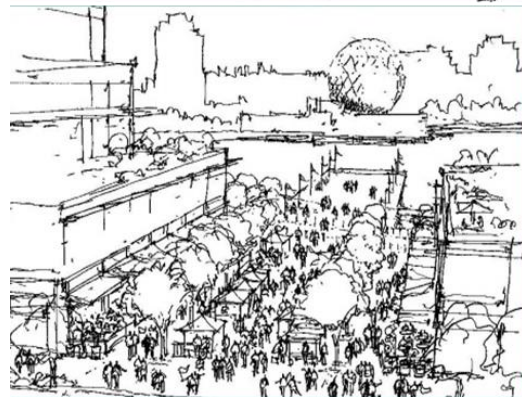
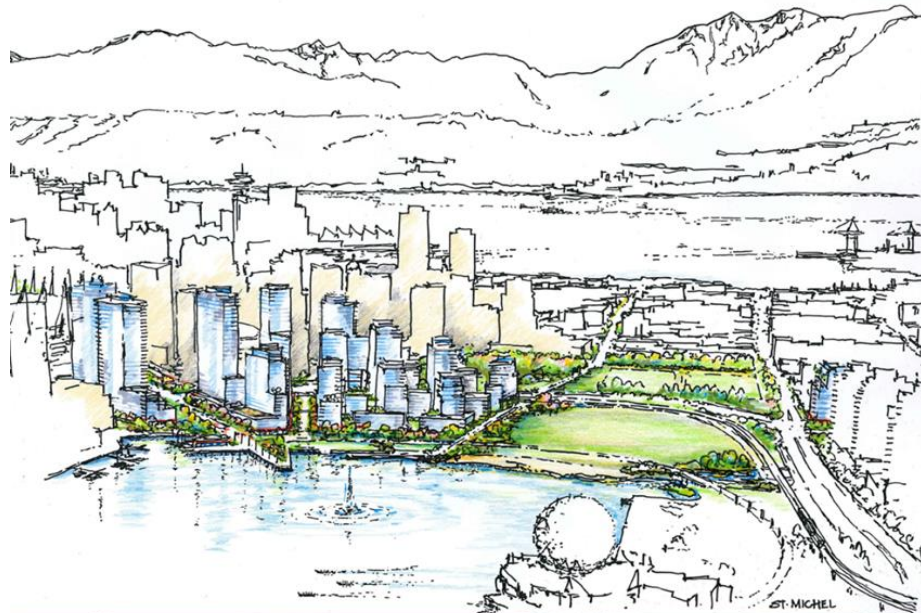
Housing Dream: An affordable 2bd apartment, rented or owned

No Rental: Limited affordable family-sized rental; ownership far out of reach

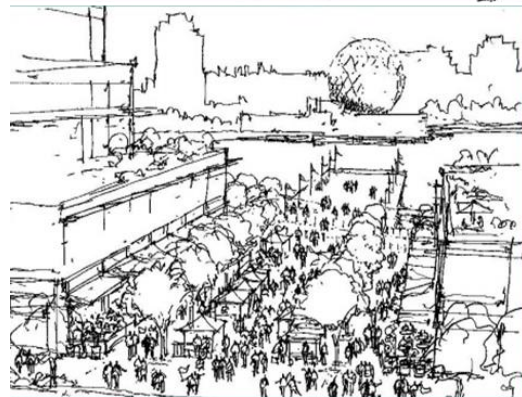
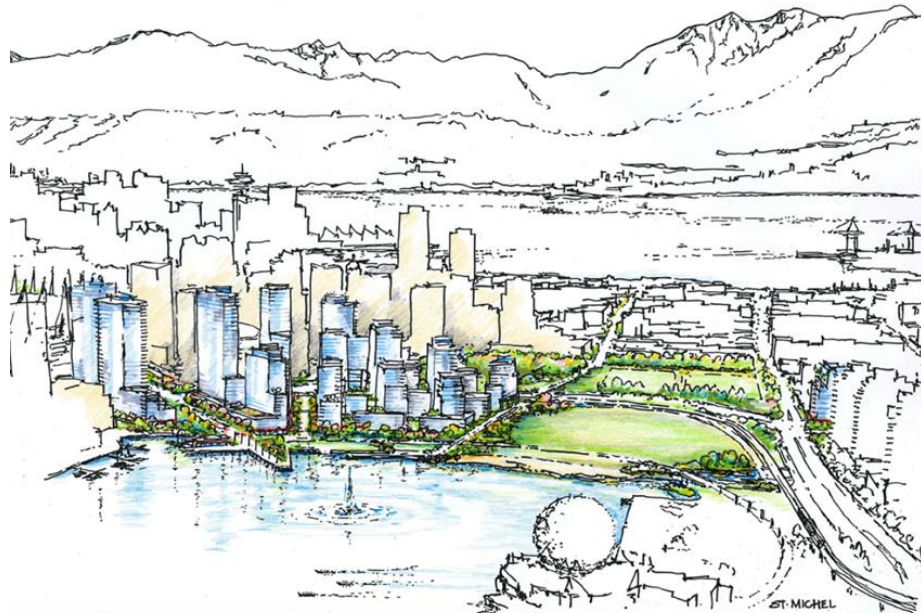
VIADUCTS REMOVAL: NE FALSE CREEK VANCOUVER



NORTHEAST FALSE CREEK PLANNING - VANCOUVER



NORTHEAST FALSE CREEK PLANNING - VANCOUVER



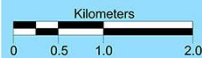
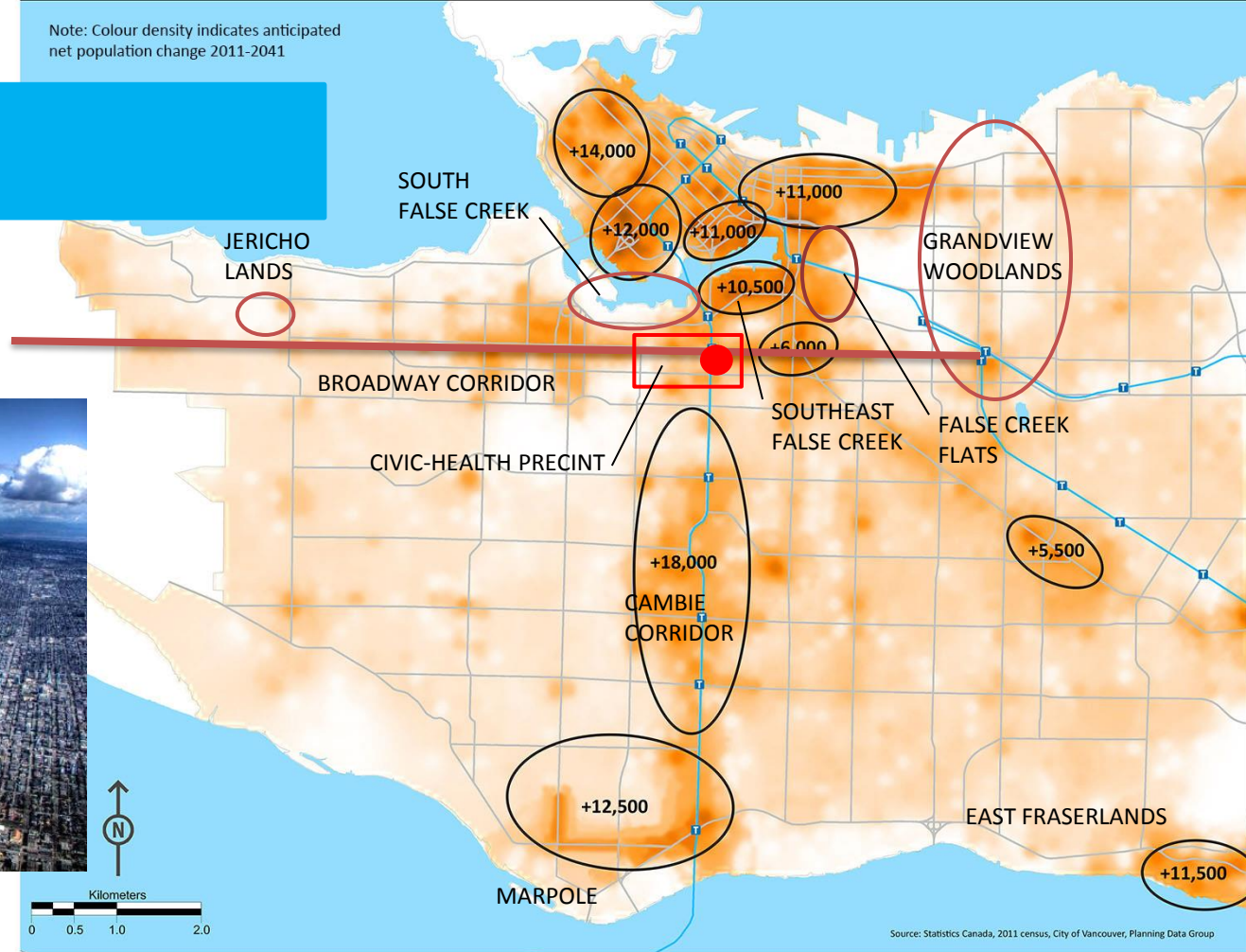
BEYOND DOWNTOWN POPULATION TARGETS

City of Vancouver - 2011 to 2041 Projected Population Change

Note: Colour density indicates anticipated net population change 2011-2041

2011 - 2041

Projected Population
2041 = 150,000+

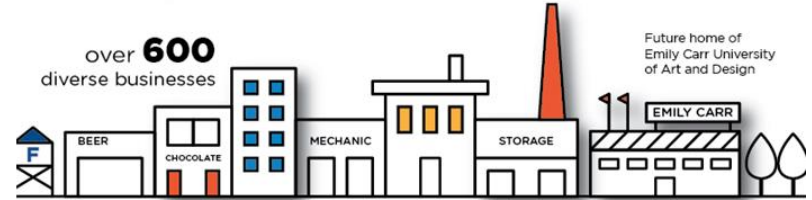


Source: Statistics Canada, 2011 census, City of Vancouver, Planning Data Group

FALSE CREEK FLATS PLAN - VANCOUVER

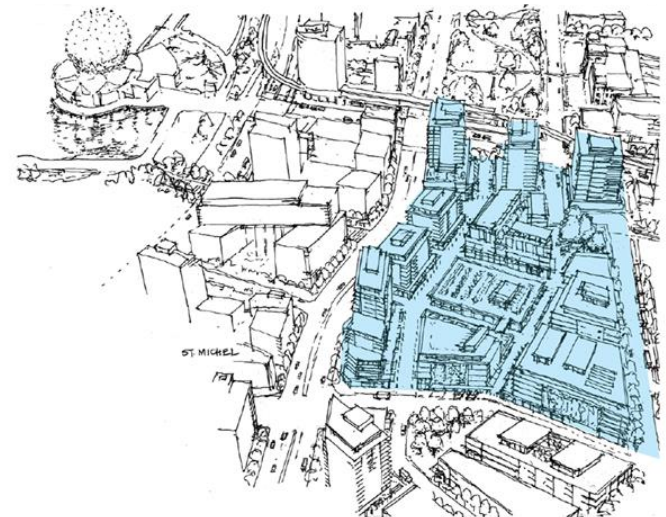


From 8,000 employees to 30,000 by 2041
From 600 residents to 8,000 by 2041



< 1km to both Downtown & the Port

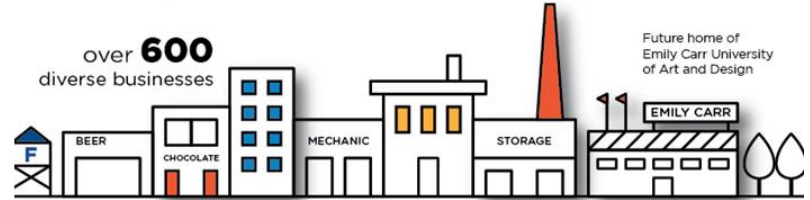
CITY OF VANCOUVER



FALSE CREEK FLATS PLAN - VANCOUVER

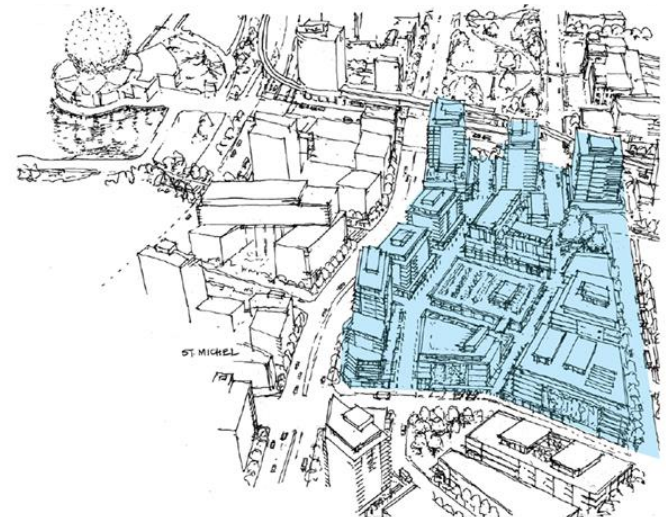


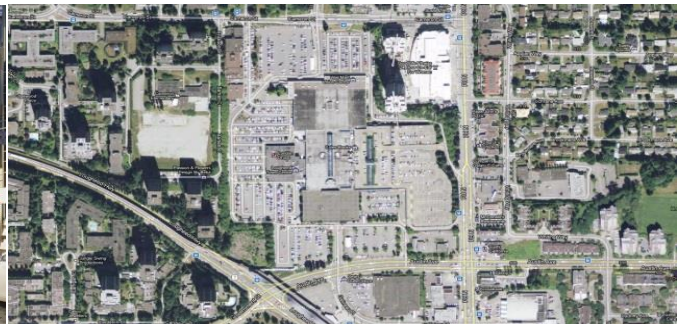
From 8,000 employees to 30,000 by 2041
From 600 residents to 8,000 by 2041



< 1km to both Downtown & the Port

CITY OF VANCOUVER





THANK YOU

**Joyce Drohan Architect, AIBC, AAA, SAA, MRAIC, CanU Board
Special Advisor, City Design Studio, City of Vancouver**